



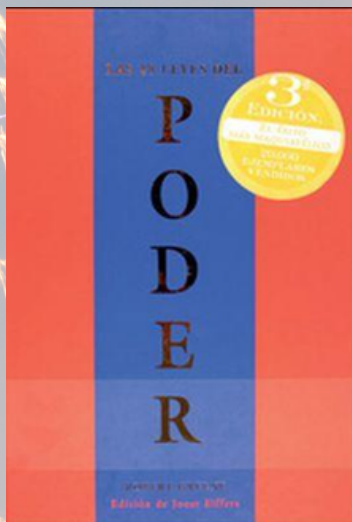
# NOVETATS MARÇ 2024



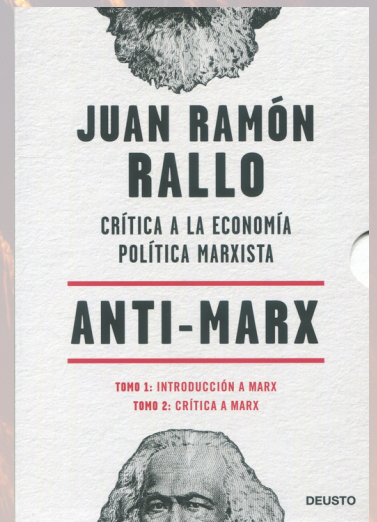
# MATERIES



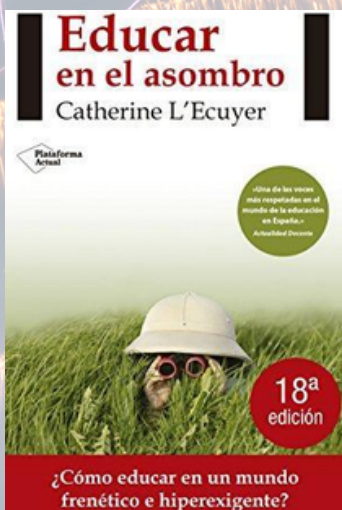
159 CLE hab



17 GRE cua



330 RAL ant 1



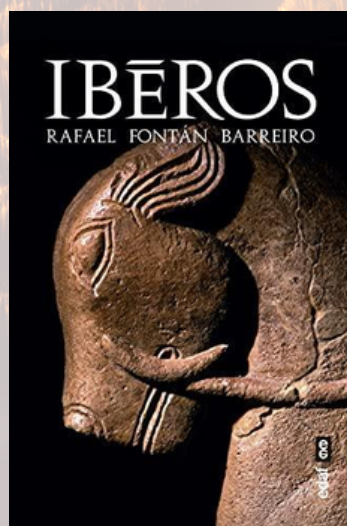
37 LEC edu



37 TIR enr



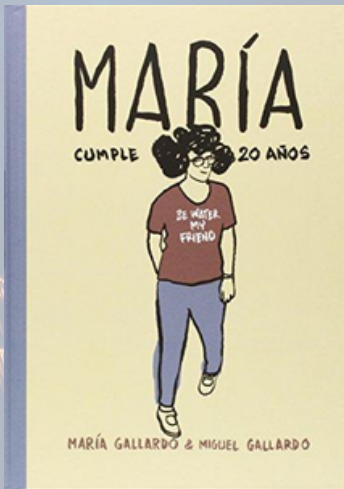
504 MAL com



936 FON ibe



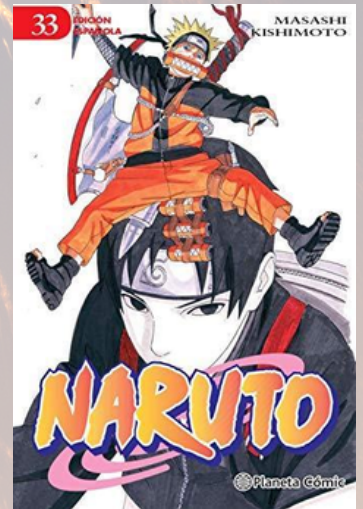
# CÒMIC I MANGA



C GAL mar



C HOR myh 1



C KIS nar 33



C KIS nar 34



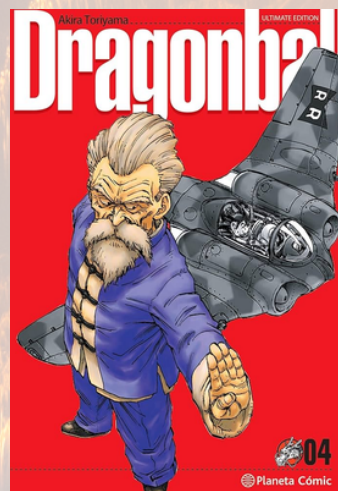
C OSE hea 4



C TOR dra 2



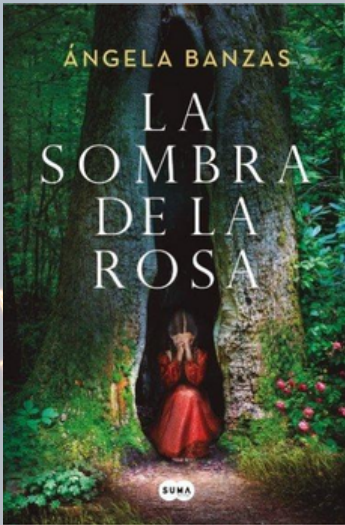
C TOR dra 3



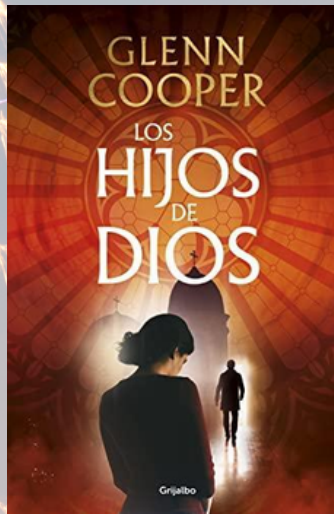
C TOR dra 4



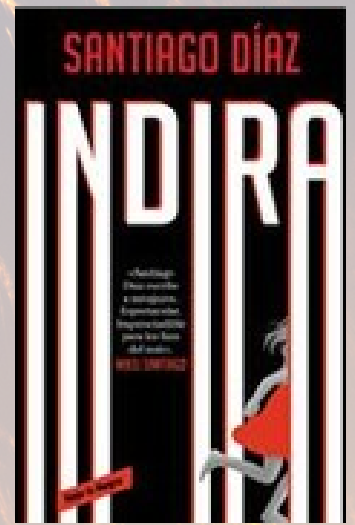
# NOVEL·LA



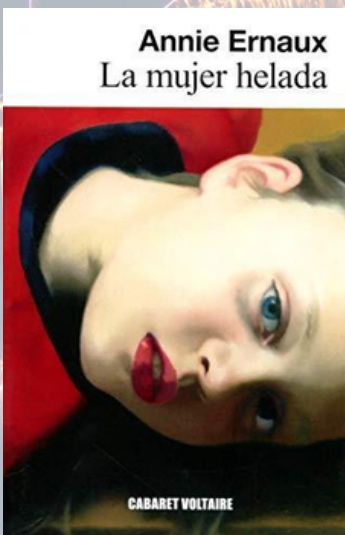
**N BAN som**



**N COO hij**



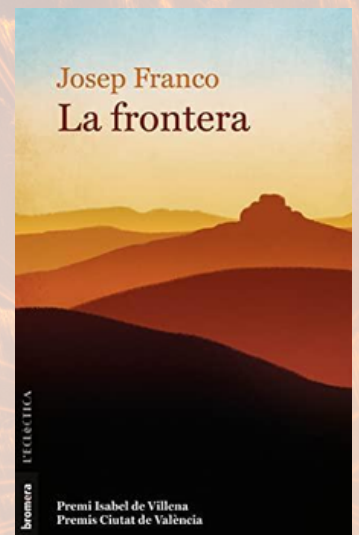
**N DIA ind 3**



**N ERN muj**



**N FOL apa**



**N FRA apa**



**N GEN con**



**N HOO rom 2**



**N ICA chi**



# NOVEL·LA I POESIA



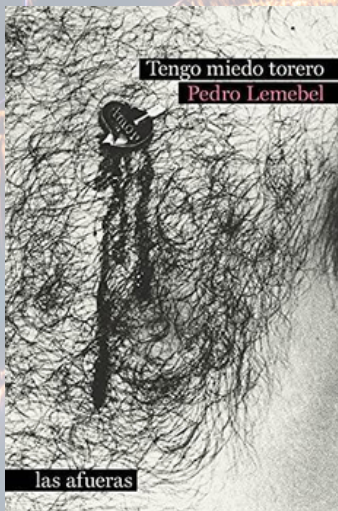
N KAW ant 1



N KEL map



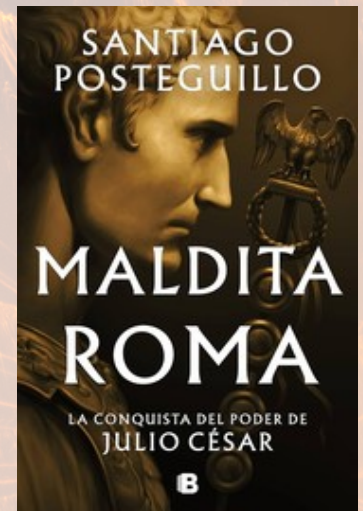
N LAR sie



N LEM ten



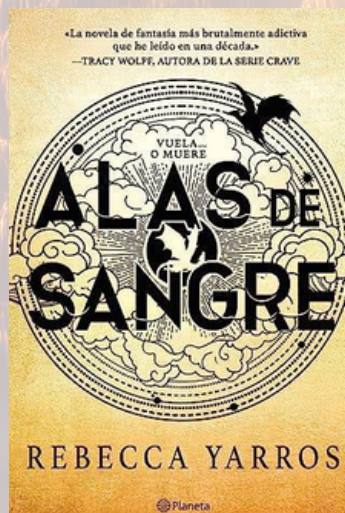
N MAK gra



N POS jul 2



N SHE ing



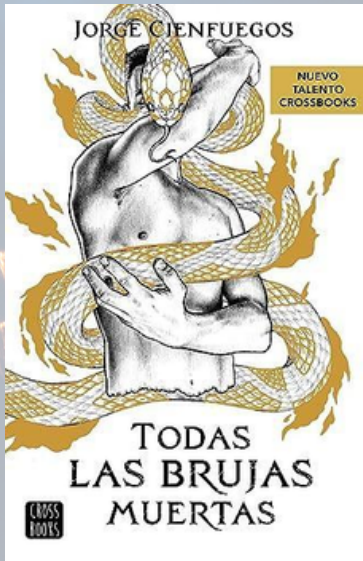
N YAR emp 1



P DIA hom



# NOVEL·LA JUVENIL



**N-J CIE tod 2**



**N-J GOD sig**



**N-J MAR mes 1**



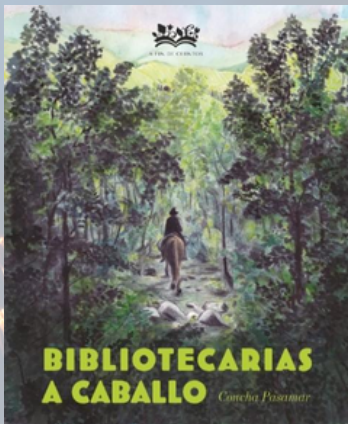
**N-J PAS lik**



**N-J PUL mat 2**



# LLIBRES INFANTILS



**J-027 PAS bib**



**J-159 FOR deu**



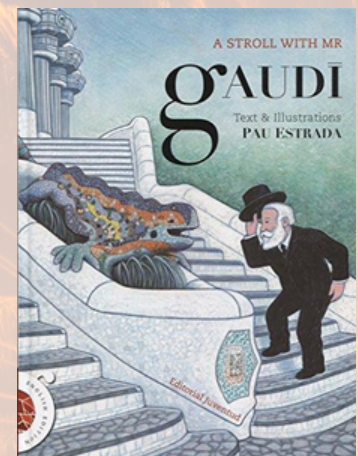
**J-52 ATK gui**



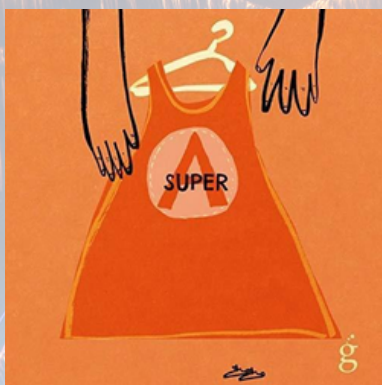
**J-613 SAL reg**



**J-794 FER aje**



**J-B GAU est**



**VOL ARN**



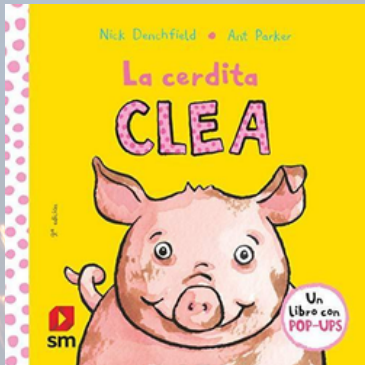
**VOL COR**



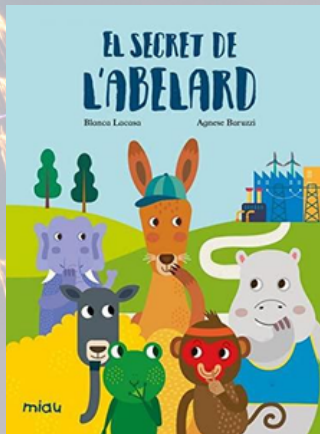
**VOL CUE**



# LLIBRES INFANTILS



**JOC DEN**



**ÀNEC LAC**



**JOC MIS**



**ÀNEC ORD**



**VOL ORO**



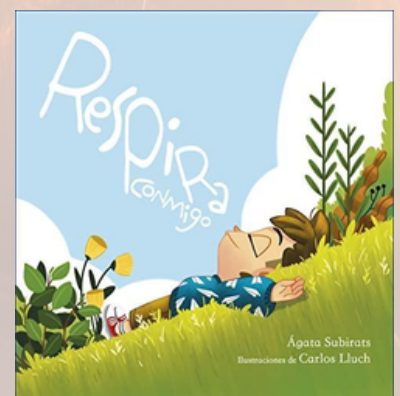
**OUET RIP**



**OUET RIP**



**VOL SPI**



**VOL SUB**



# LLIBRES INFANTILS



**VOL TIR**



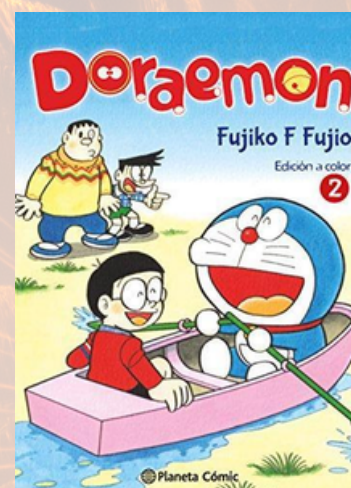
**JOC WIT**



**JR-C CHA dia 4**



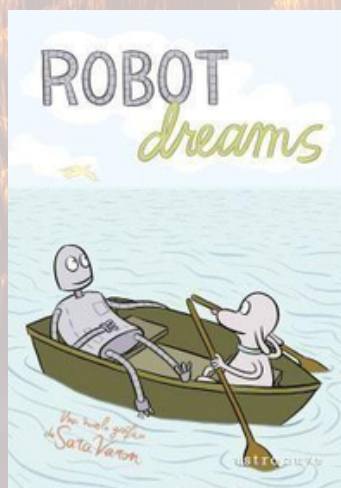
**JR-C ESC bru 3**



**JR-C FUJ dor 2**



**JR-C MOR say 3**



**JR-C VAR rob**



**JR-C DO nin 3**



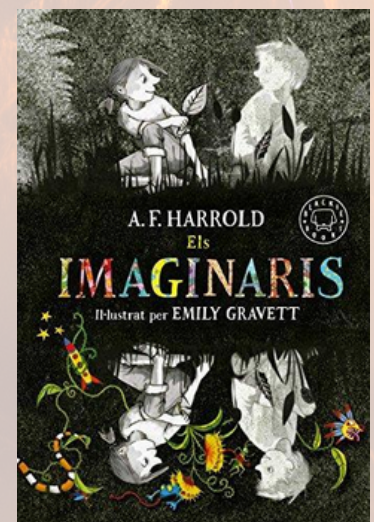
# LLIBRES INFANTILS



JR-N ITA ita 1 JR- MAÑ ann 11 JR-N MAÑ pri 3



JR-N MAÑ pri 4 JR-N MUN gra 3



JV-N BLY tor 1 JV- GOL cap 5 JV-N HAR ima



# LLIBRES INFANTILS



JV-N ISE aqu 3



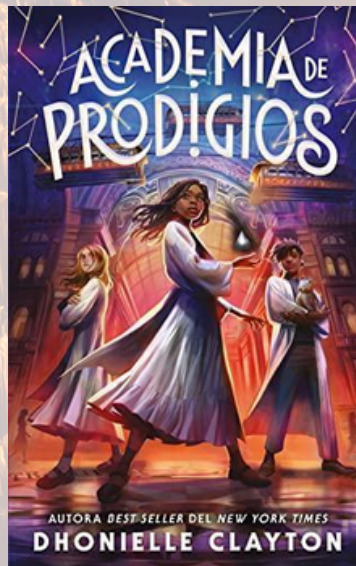
JV- MIK com 7



JV-N NAV ara



JA-N AMA car 3



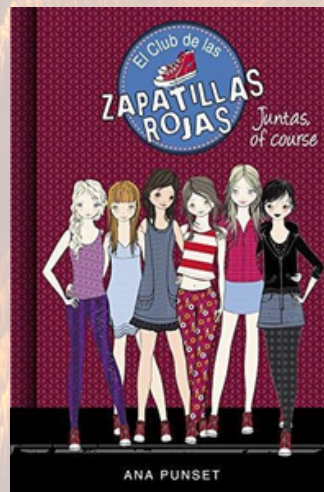
JA-N CLA aca 1



JA-N HUG mis



JA-N NES qui



JA-N PUN clu 8